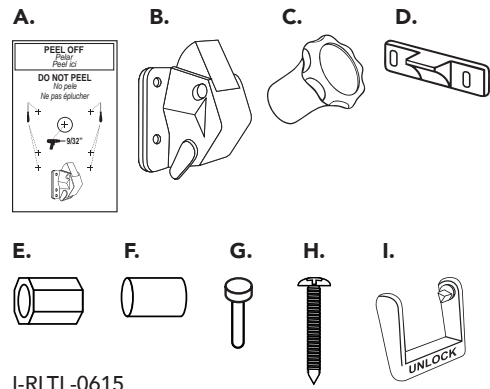


## COMPONENTS

- A. Template (double sided)
- B. Lock Assembly
- C. Lock Key
- D. Striking Plate
- E. Drill Bit Depth Gauge
- F. Extension Slug
- G. Plunger
- H. Screws: #4 x 1/2" Pan Head Phillips
- I. Unlocking Bar

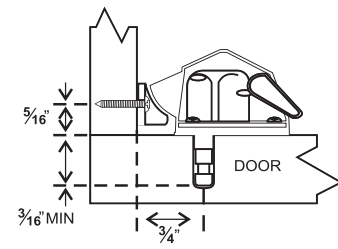


I-RLTL-0615

## TOOLS REQUIRED

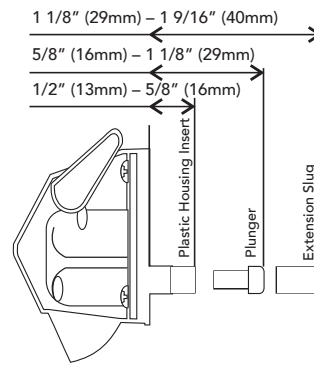
- A. Power Drill
- B. Phillips Screwdriver
- C. Punch or Nail
- D. 1-Drill Bit 9/32" (7mm)
- E. 1-Drill Bit 1/16" (1.5mm Optional for pilot holes)

## INSTALLATION OVERVIEW



## DOOR THICKNESS

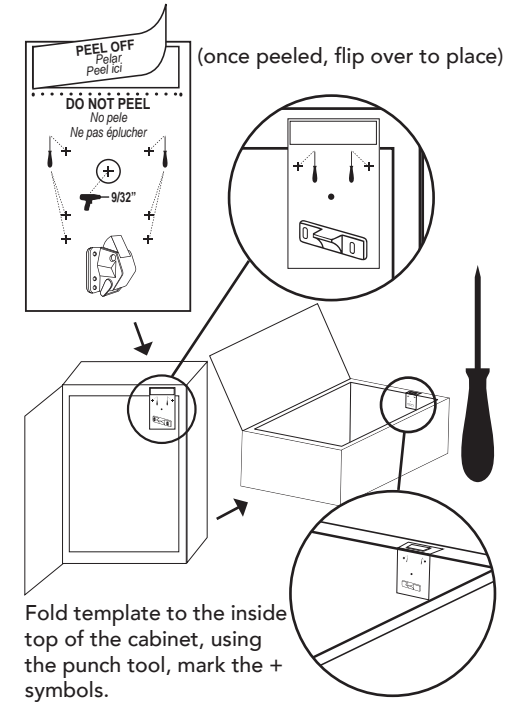
Use components within arrows.



## STEP 1

Peel narrow backing paper strip from *Template's Lock Assembly* side, flip over. Apply that side to cabinet frame, the *Template's Striking Plate* side is facing out.

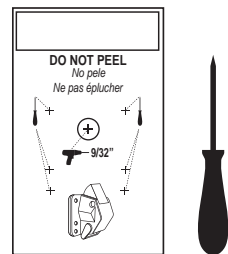
## STEP 2



Peel backing, close cabinet door firmly, transferring template. The template will now display the *Lock Assembly* icon

## STEP 3

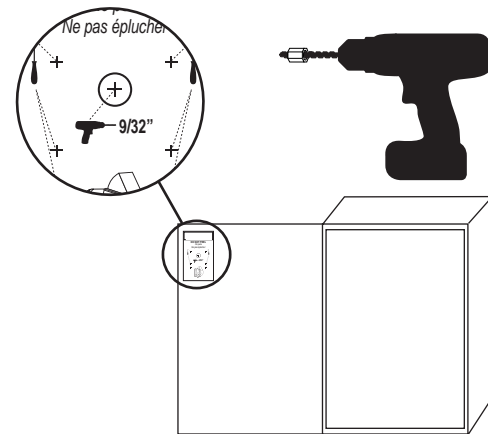
Open door and mark + with punch.



## STEP 4

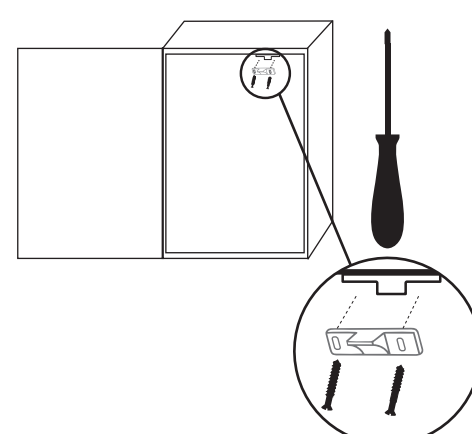


## STEP 5



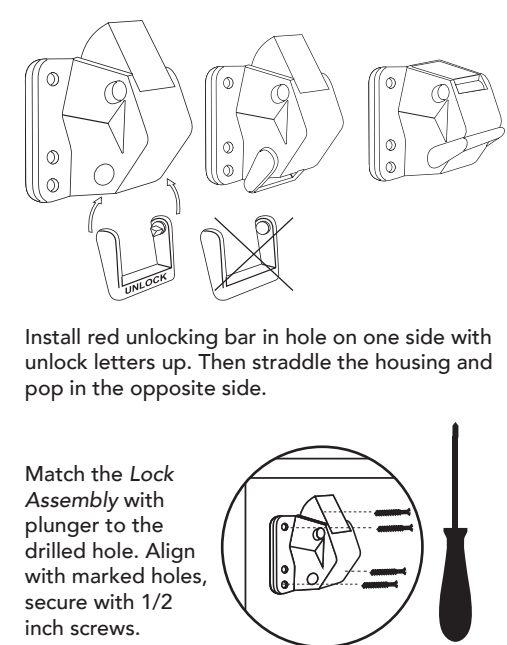
Drill into the marked 9/32" hole location into installation template, **using caution not to drill through the door.** The hole must be clear and free of debris.

## STEP 6



Match striking plate over two locations marked during *Step 2*. Use screws and install loosely so slot adjustments can be made later.

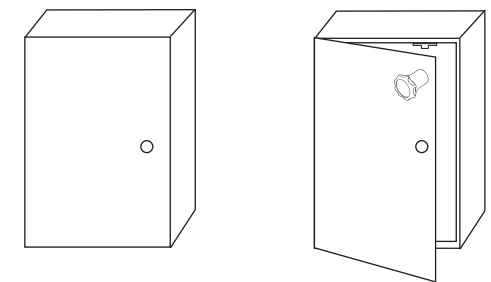
## STEP 7



Install red unlocking bar in hole on one side with unlock letters up. Then straddle the housing and pop in the opposite side.

Match the *Lock Assembly* with plunger to the drilled hole. Align with marked holes, secure with 1/2 inch screws.

## USING KEY



Use Lock Key to open cabinet door/drawer.

MindCare  
www.MindCareStore.com  
Made in the USA

I-RLTL-0615